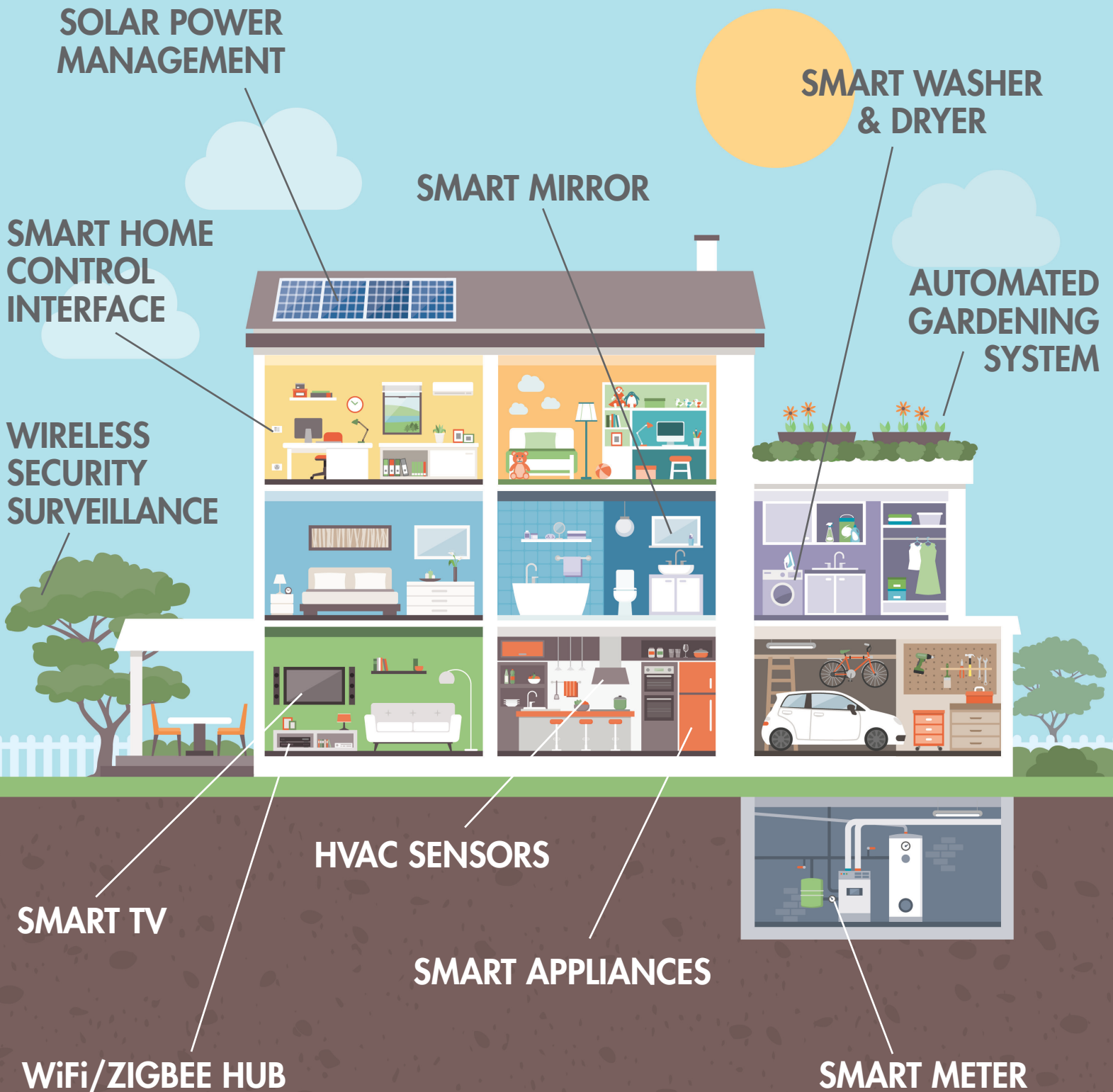


TECHNOLOGY TEARDOWN

SMART HOME



COMPONENT	DESCRIPTION	SUPPLIERS	PRODUCTS	DEVELOPMENT KITS
SENSORS				
Optical	Ambient light, Ultraviolet, Infrared, Proximity	Silicon Labs, Murata, iC-Haus	<u>Ambient Light</u> : Si1120, Si1153, XS-Z16-CB2R <u>Ultraviolet</u> : Si1133 <u>Infrared</u> : IRA Series, Si1153 <u>Proximity</u> : Si1102, Si1153, Si1120	115xOPT-EXP-EVB, LT-1PA01, IMX-070
Humidity		Silicon Labs, Digi	Si7023, Si7034, XS-Z16-CB2R	Si7022-23-EVB, Si7034-EVB
Temperature		Silicon Labs, Digi, Murata	Si706x, Si7007/22/23, XS-Z16-CB2R, PTFL/NCU/NXF Series	Si7022-23-EVB, Si7060-EVB, MTHMR-N-0002A
Magnetic	AMR, Hall-effect Sensor	Silicon Labs, iC-Haus, Murata, Micronas	<u>Hall Sensor</u> : Si7210, HAL 37xy, HAL 24xy, Si721x <u>AMR</u> : MRMS591, iC-SM2L	HAL-APB V1, HAL USB-Kit
Motion	Accelerometer, Gyroscope, Accel/Gyro combo, Pressure	Murata, Invensense	<u>Accelerometer</u> : SCA800, SCA2100, SCA3100, SCA3300 <u>Gyroscope</u> : ISZ-2510, IXZ-2510, ITG-1010 <u>Accel/Gyro combo</u> : ICM-20602, ICM-20789, ICM-20948 <u>Pressure</u> : ICP-101xx	MEMS-EVAL-BOARD, MEX-1031, AN-IVS-0001EVB
Ultrasonic	Range detection	Murata	MA300D1, MA40S4R, MA40S4S, MA58MF14	MAX-15-0082
PROCESSOR				
MCU	8-bit	Silicon Labs	EFM8 Bee Series	SLSTK20/00A/01A/10A/30A
	32-bit	Silicon Labs, Redpine	EFM32 Gecko Series, RS12000 SmartMCU	EFM32WG-STK3800, SLSTK3701A, SLSTK2030A, SLSTK2001A
CONNECTIVITY				
Bluetooth	Bluetooth Low Energy, Bluetooth Mesh, Bluetooth Classic	Nordic, Silicon Labs, Taiyo Yuden, Murata, Redpine	nRF52 Series, BGM13P/13P2, BGX13P/S, EYSKBNZWB, RS13100, MBN52832	SLEXP8027A, nRF52 DK, Bluegiga WTxx, EYSKBNZWB, MBN52832DK
Zigbee	IEEE 802.15.4	Digi, Silicon Labs, Redpine, Decawave	Digi XBee3, Digi XBee Gateway, RS13100, MGM13S, MGM12P, DW1000, DWM1000	SLWRB4305E, SLWRB4304A
WiFi	IEEE 802.11a/b/g/n/ac	Silicon Labs, Murata, Taiyo Yuden, Realtek, Lantronix	WGM110, AMW007, Type1HD, WYSBHVXG, xPico 240	WBSBHVXG, Cypress WICED, Wizard Gecko, AMW007-E04
Combo Modules	WiFi + Bluetooth	Redpine Signals, Murata, Lantronix	RS14100, RS9116, RS9113, LBEE-59B1LV, LBEE5PA1LD, xPico 250	Cypress WICED
Gateways	WiFi, Zigbee, Bluetooth	Digi, MultiTech	Digi ConnectPort X2, Digi XBee Gateway, Multiconnect Conduit	
Antenna	Internal (PCB, Flex, SMD), External	Ethertronics, EAD	1001013, M830520, 1000146, W-Flex, BTR2458	
TIMING				
Oscillators (XO, VCXO)	Any-frequency, ultra-low-jitter oscillators, simple crystal units	Silicon Labs, Murata	Si53x, Si51x, XRCTD, XRCFD, XRCGB, Si54x, Si55x, Si56x, Si571, Si59x	Si5xx-EVB Development Kit
Buffers	Differential, PCIe, LVCMOS and universal, any-format buffers	Silicon Labs	Si5315x, Si5330x, Si5331x, Si5336x, Si5330x, Si5334x, Si5332x, Si5311x	Si5315-EVB, Si53301-4-EVB, Si5338-EVB, Si53108-EK
Clocks	Single-chip clock generators, jitter attenuators, network synchronizers	Silicon Labs	Si535x, Si534x, Si5332x, Si5334x, Si5338x, Si5350x, Si5211x, Si5321	Si5340-D-EVB, Si5391A-A-EVB, Si5338-EVB, Si5332-12EX-EVB
POWER MANAGEMENT				
DC/DC	Low noise, EMI, ripple, and efficient step-down (buck), step-up (boost), and step-down/step-up (buck/boost)	MPS, RECOM, Torex	MPM3805, MPM3620, mEZDPD3603A XC9267, XC9275, XC9280, XC9281, XC9282 919-RFM-0505S, R-78B5.0-2.0, R-78S3.3-0.1	EVM3805-QB-00A, EVM3620A-QV-00A, PKT-mEZDPD3603A, R-78S3.3-0.1-EVM-1
AC/DC	PFC controllers, flyback, LLC, secondary synchronous rectifier, HV buck regulators, HV Smart LDO regulators	MPS, RECOM, Torex	MP103, MP100L, MP175, MP150, MP155, MP163A, HR1000A, RAC01-G, RAC05-K, RAC20-K, RAC35-G, RAC150-G, RACM	EV163-SE-00A
LDO	Single and multi-channel low-drop-out linear DC-DC regulators	MPS, RECOM, Torex	MP2013A, MP2015, MP8802, MP8801, XC6901, XC6902, XC62KN, XC6206J, XC6223, XC6233	EV2013A-5J_Q_G-00A, MP2015A, EV2015A-J_Q_G-00A, EV8802DJ-00A
LED Driver	Drivers, regulators and TRIAC dimmers	MPS, RECOM, Torex	MP4026/7, MP4054A, MP2410, MP2370, RACD03-700-PSE, RACD03-350, RACD04-500, RACD06-350-LP	RACD03-500-PSE, RACV20-24-LP
EFuse	Integrated load switches	MPS, RECOM, Torex	MP5016L, MP5000A, MP5002, MP5018, XC8109, XC8108, XC8107, XC8102, XC8101	EV5016-LQH-00A